



## FORM-FIT DOCKS FOR ZEBRA TC73 & TC78

SKUs AVAILABLE



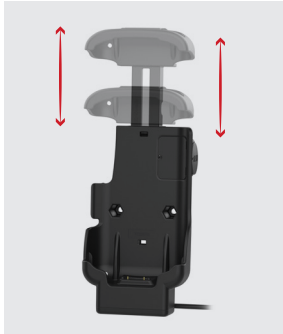
### PRODUCT INFORMATION

<b>HARDWARE INCLUDED</b> ① (2) #8-32 x 5/8" Machine Screws ② (2) #8-32 x 3/4" Machine Screws ③ (2) #8-32 Nylock Nuts	<b>HOLE PATTERN</b> 2-Hole AMPS: 1.912"	<b>MATERIALS</b> High strength composite	<b>INPUT CONNECTOR</b> 5.5mm DC Connector	<b>INPUT CABLE LENGTH</b> 1.25 meters	<b>WEIGHT</b> 0.67 lbs.	<b>WARRANTY STATUS</b> 3 years	<b>PATENTED</b>



# FORM-FIT DOCKS FOR ZEBRA TC73 & TC78

## FEATURES



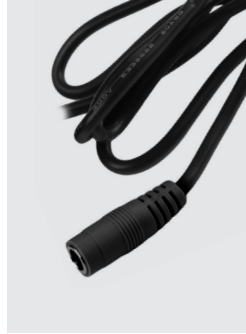
### SPRING-LOADED FORM-FIT DOCK

Adjustable height allows you to secure the newest model of the Zebra TC7X line, the TC78.



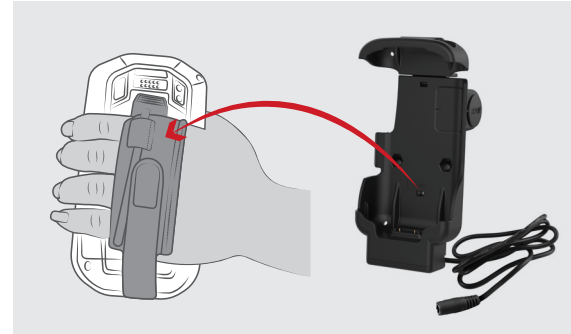
### POGO PIN TECHNOLOGY

Integrated pogo pin contacts provide charging power to the device and protects the device's ports from constant plugging and unplugging.



### AVAILABLE IN POWER & NON-POWERED

Power is provided by a standard 1.2m long DC Female cable that delivers charging capabilities.



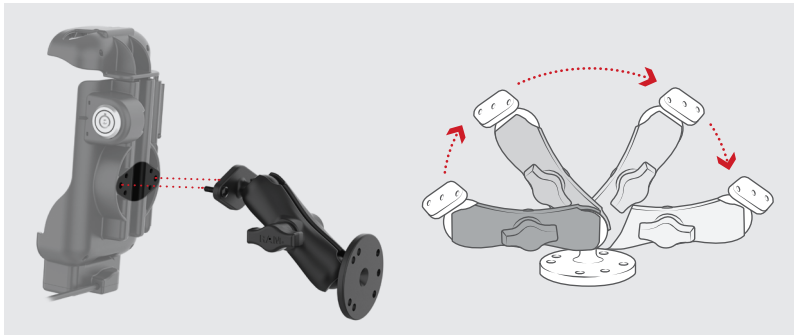
### ZEBRA HAND STRAP COMPATIBLE

The RAM® Powered Docks and Holders contain space in the back allowing for the integration of the Zebra hand strap accessory.



### LOCKING VERSION AVAILABLE

Includes a set of keys for theft deterrence.



### COMPATIBLE WITH RAM® TWO-HOLE AMPS PATTERN DIAMOND BASES

Compatible with B and C size RAM® 2-hole diamond bases for attaching a double socket arm; ball and socket technology allows for near-infinite adjustability.



### INTEGRATED STYLUS HOLDER

Includes an integrated stylus holder that snaps your stylus into place while not in use.



### BUTTONS AND FEATURES FULLY ACCESSIBLE

Buttons and features are fully accessible while the device is docked.

## PRIMARY MARKETS



**FIELD  
INSPECTION**



**FIELD  
COLLECTION**



**FIELD  
DELIVERY**



**FIELD  
SERVICE**



**RETAIL**