

IntelliSkin® for Samsung Galaxy Tab A 10.1 (2019)

IntelliSkin® is a protective sleeve featuring GDS® Technology™ for the Samsung Galaxy Tab A 10.1 (2019). Wrapping around the device, IntelliSkin® provides military-grade drop protection and features an integrated GDS® connector molded directly into the skin that prevents damage to the device's charging port. The exterior of the IntelliSkin® sleeve includes contacts designed for repetitive docking in field applications with a variety of USB Type-C GDS® Docks™ and accessories.

Compatible Devices:

Samsung Galaxy Tab A 10.1 (2019)
SM-T510, SM-T515

RAM-GDS-SKIN-SAM50

Features:

- IntelliSkin® wraps around the device providing drop protection.
- GDS® connector allows for repetitive charging in GDS® powered docking stations
- 3-year warranty on all electronics

Compatible GDS® Docks:

- [RAM-GDS-DOCKL-V2-SAM49U](#)
GDS® Locking Vehicle Dock
- [RAM-GDS-DOCK-D2CU](#)
GDS® Desktop Dock for IntelliSkin® Products
- [RAM-GDS-DOCK-6G1PU*](#)
GDS® 6-Port Desktop Charger for IntelliSkin® Products

Compatible GDS® Accessories:

- [RAM-GDS-CHARGE-V7-USBCU](#)
GDS® Modular Hardwire Charger*
- [RAM-GDS-AD3CU](#)
GDS® Snap-Con™ Charger
- [RAM-GDS-HS1U](#)
GDS® HandStand™ Tablet Hand Strap and Kick Stand**
- [RAM-GDS-SS1U](#)
GDS® Shoulder Strap Accessory

*Does not support USB Type-C power delivery

**RAM-GDS-HS1-RISER2U required when using in vehicle dock

Patented and Pats. Pend



rammount.com
1-800-497-7479
sales@rammount.com



IntelliSkin® for Samsung Galaxy Tab A 10.1 (2019)

How It Works



Protect

Certified MIL-STD-810G drop protection



Charge

Integrated charging connector keeps your device powered



Dock

The distinctive D-shape™ connector standardizes vehicle and desktop docks



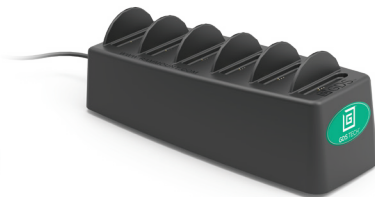
Future Proof

Upgrading devices? Simply swap out IntelliSkin® sleeve and top cup with compatible versions

Accessories



RAM-GDS-DOCK-D2CU



RAM-GDS-DOCK-6G1PU



RAM-GDS-SS1U



RAM-GDS-HS1U