



IntelliSkin® Thin-Case™ for the Apple iPad 10th Gen

AVAILABLE SKUs

CLICK OR SCAN
TO VIEW ALL PRODUCTS



RAM-GDS-SKIN-AP40-TCB
IntelliSkin® Thin-Case™ for Apple iPad 10th Gen (Rear Pogo Pads)

Powered Uni-Conn™ Adapter included with any IntelliSkin® Thin-Case™ (Rear Pogo Pads).



RAM-GDS-SKIN-AP40-TCD
IntelliSkin® Thin-Case™ for Apple iPad 10th Gen

GDS® Uni-Conn™ Adapter (RAM-GDS-U1U) needed to enable GDS® Uni-Conn™ docks.

PRIMARY MARKETS



HEALTHCARE



FOOD SERVICE



RETAIL



IntelliSkin® Thin-Case™ for the Apple iPad 10th Gen

FEATURES & BENEFITS



Two-piece Device Enclosure

A robust, two-piece polycarbonate shell makes it easy to install and deters from unwanted removal—simply slide the device in, plug the bottom half into the USB-C port, and secure with included hardware.



Slim, Low-profile Design

The two-piece shell sports a slim design, with fewer cutouts and grooves compared to the original IntelliSkin®, and is made of a smooth polycarbonate material, making it easy to sanitize.



Connect with Rear Pogo Pads

Up until now, IntelliSkin® has been recognized for its Distinctive D-Shape™ connector located on the bottom of the sleeve. The new IntelliSkin® Thin-Case™ with Rear Pogo Pads features a powered Uni-Conn™ adapter that unlocks the low-profile GDS® Ecosystem™ of docks.



Easy to Clean

Connection interruptions are unavoidable. The main cause is excessive debris buildup, this is easily addressed with regular cleaning. The pogo pad contacts built-in to IntelliSkins® are intentionally flat to reduce the debris buildup and are easier to clean.



IntelliSkin® Thin-Case™ for the Apple iPad 10th Gen

DIMENSIONS

RAM-GDS-SKIN-AP40-TCB

IntelliSkin® Thin-Case™ for Apple iPad 10th Gen (Rear Pogo Pads)



RAM-GDS-SKIN-AP40-TCD

IntelliSkin® Thin-Case™ for Apple iPad 10th Gen





IntelliSkin® Thin-Case™ for the Apple iPad 10th Gen

COMPATIBLE DOCKS (REAR POGO PADS)



RAM-GDS-DOCK-U3CPU

GDS® Uni-Conn™ Powered Snap-In Dock with USB-C Connector



RAM-GDS-DOCK-U3JPU

GDS® Uni-Conn™ Powered Snap-In Dock with JST Connector



RAM-GDS-DOCK-W4-CU

GDS® Uni-Conn™ Powered Wall Dock with USB-C



RAM-GDS-DOCK-W4-POEU

GDS® Uni-Conn™ Powered Wall Dock with PoE



RAM-GDS-DOCK-D10K-C

GDS® Uni-Conn™ Powered Kiosk Dock with USB-C



RAM-GDS-DOCK-D10K-POE

GDS® Uni-Conn™ Powered Kiosk Dock with PoE



RAM-GDS-DOCK-D10V-C

GDS® Uni-Conn™ Powered Uni-Conn™ Adapter with 75mm VESA Pattern



IntelliSkin® Thin-Case™ for the Apple iPad 10th Gen

COMPATIBLE DOCKS (D-SHAPED POGO PADS)



GDS® Uni-Conn™ Powered Docks*

Comes in locking, non-locking, & variety of peripheral connections



*RAM-GDS-U1AU adapter required

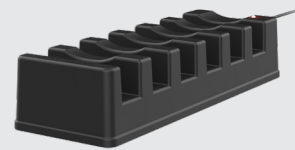


RAM-GDS-DOCK-W3-POE*

GDS® Uni-Conn™ Wall Dock with Magnetic Receiver & POE



*RAM-GDS-U1AU adapter required



RAM-GDS-DOCK-6G16P

GDS® 6-Port Powered Dock for Tablets with IntelliSkin®



RAM-GDS-DOCK-D9U

GDS® Desktop Dock with Power Delivery - Large Tablets



IntelliSkin® Thin-Case™ for the Apple iPad 10th Gen

ACCESSORIES



RAM-GDS-SS1-TCU

GDS® Shoulder Strap Accessory for IntelliSkin® Thin-Case™



RAM-GDS-TC-HS1U

GDS® Hand Strap for IntelliSkin® Thin-Case™ - Medium & Small Tablets