



IntelliSkin® Thin-Case™ for the Apple iPad mini 6

AVAILABLE SKUs

CLICK OR SCAN
TO VIEW ALL PRODUCTS



RAM-GDS-SKIN-AP36-TCB

IntelliSkin® Thin-Case™ for Apple iPad mini 6 (Rear Pogo Pads)

Powered Uni-Conn™ Adapter included with any IntelliSkin® Thin-Case™ (Rear Pogo Pads).



RAM-GDS-SKIN-AP36-TCB

IntelliSkin® Thin-Case™ for Apple iPad mini 6

GDS® Uni-Conn™ Adapter (RAM-GDS-U1U) needed to enable GDS® Uni-Conn™ docks.

PRIMARY MARKETS



HEALTHCARE



FOOD SERVICE



RETAIL



IntelliSkin® Thin-Case™ for the Apple iPad mini 6

FEATURES & BENEFITS



Connect with Rear Pogo Pads

Up until now, IntelliSkin® has been recognized for its Distinctive D-Shape™ connector located on the bottom of the sleeve. The new IntelliSkin® Thin-Case™ with Rear Pogo Pads features a powered Uni-Conn™ adapter that unlocks the low-profile GDS® Ecosystem™ of docks.



Slim, Low-profile Design

The two-piece shell sports a slim design, with fewer cutouts and grooves compared to the original IntelliSkin®, and is made of a smooth polycarbonate material, making it easy to sanitize.



Two-piece Device Enclosure

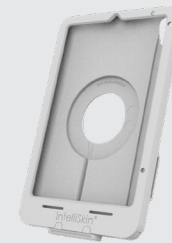
A robust, two-piece polycarbonate shell makes it easy to install and deters from unwanted removal—simply slide the device in, plug the bottom half into the USB-C port, and secure with included hardware.



Easy to Clean

Connection interruptions are unavoidable. The main cause is excessive debris buildup, this is easily addressed with regular cleaning. The pogo pad contacts built-in to IntelliSkins® are intentionally flat to reduce the debris buildup and are easier to clean.

Custom Color Options



Seamlessly integrate your device into retail & medical settings with the sophisticated Light Gray collection.



Interested in custom colored products for your business?

Contact:
support@rammount.com



IntelliSkin® Thin-Case™ for the Apple iPad mini 6

DIMENSIONS

RAM-GDS-SKIN-AP36-TCB

IntelliSkin® Thin-Case™ for Apple iPad mini 6 (Rear Pogo Pads)



RAM-GDS-SKIN-AP36-TCD

IntelliSkin® Thin-Case™ for Apple iPad mini 6





IntelliSkin® Thin-Case™ for the Apple iPad mini 6

COMPATIBLE DOCKS (REAR POGO PADS)



RAM-GDS-DOCK-U3CPU
GDS® Uni-Conn™ Powered Snap-In
Dock with USB-C Connector



RAM-GDS-DOCK-U3JPU
GDS® Uni-Conn™ Powered Snap-In
Dock with JST Connector



RAM-GDS-DOCK-W4-CU
GDS® Uni-Conn™ Powered Wall
Dock with USB-C



RAM-GDS-DOCK-W4-POEU
GDS® Uni-Conn™ Powered Wall
Dock with PoE



RAM-GDS-DOCK-D10K-C
GDS® Uni-Conn™ Powered Kiosk
Dock with USB-C



RAM-GDS-DOCK-D10K-POE
GDS® Uni-Conn™ Powered Kiosk
Dock with PoE



RAM-GDS-DOCK-D10V-C
GDS® Uni-Conn™ Powered Uni-Conn™
Adapter with 75mm VESA Pattern



IntelliSkin® Thin-Case™ for the Apple iPad mini 6

COMPATIBLE DOCKS (D-SHAPED POGO PADS)



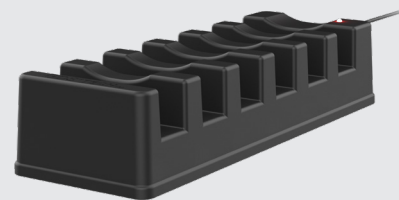
*** GDS® Uni-Conn™ Powered Docks**
Comes in locking, non-locking, and variety of peripheral connections



*** RAM-GDS-DOCK-W3-POE**
GDS® Uni-Conn™ Wall Dock with Magnetic Receiver & POE



RAM-GDS-DOCK-D9U
GDS® Desktop Dock with Power Delivery - Large Tablets



RAM-GDS-DOCK-6G16P
GDS® 6-Port Powered Dock for Tablets with IntelliSkin®



RAM-HOL-U1U
RAM® Holder for Tablets with GDS® Uni-Conn™ Button



***RAM-GDS-U1U Adapter Required**



IntelliSkin® Thin-Case™ for the Apple iPad mini 6

ACCESSORIES



RAM-GDS-SS1-TCU
GDS® Shoulder Strap Accessory
for IntelliSkin® Thin-Case™



RAM-GDS-TC-HS1U
GDS® Hand Strap for IntelliSkin®
Thin-Case™ - Medium & Small Tablets