






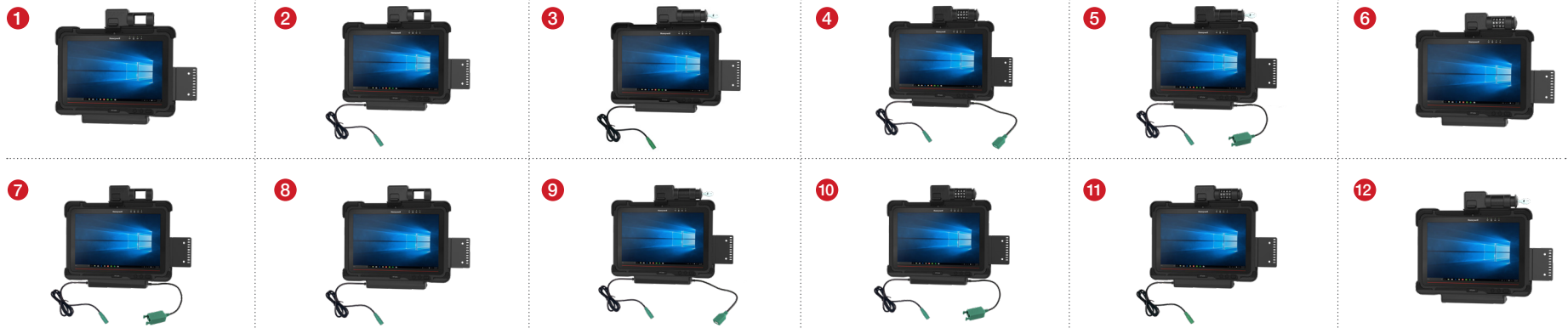
RAM® Docks for Honeywell RT10 Tablet

These RAM® Vehicle Docks feature a form-fit design specifically for the Honeywell RT10 rugged tablet, including cutouts leaving all buttons and ports exposed. The dock also allows the tablet's scanning function to work through the cutout on the back which also accommodates tablet add-ons such as scanner, hand strap, and extended battery pack. Additional versions of this dock include two different locking options, as well as power and power + data transfer options for peripheral support. These vehicle docks are compatible with C and D size RAM® 4-hole AMPS and 75mm x 75mm VESA pattern bases for attaching a double socket arm to complete your mounting solution. Take the solution a step further by taking advantage of the built-in 2-hole mounting plate compatible with RAM® 2-hole diamond base for additional device mounting such as a phone, or other handheld device. An included optional accessory bracket will allow you to connect RAM® 2-hole diamond bases for device mounting and features a cable management system.

Compatible Device:
Honeywell RT10



	 POWER	 KEY LOCK	 CODE LOCK	 SINGLE USB PERIPHERAL PORT	 DUAL USB PERIPHERAL PORTS
1 RAM-HOL-HON9U					
2 RAM-HOL-HON9PU	•				
3 RAM-HOL-HON9PKLU		•			
4 RAM-HOL-HON9PDCLU	•		•	•	
5 RAM-HOL-HON9PD2KLU	•	•			•
6 RAM-HOL-HON9CLU			•		
7 RAM-HOL-HON9PD2U	•				•
8 RAM-HOL-HON9PDU	•				
9 RAM-HOL-HON9PDKLU	•	•		•	
10 RAM-HOL-HON9PD2CLU	•				•
11 RAM-HOL-HON9PCLU	•		•		
12 RAM-HOL-HON9KLU		•	•		



rammount.com
1-800-497-7479
sales@rammount.com



RAM® Docks for Honeywell RT10 Tablet

Compatible Products:



RAM-D-2461U-C-247-4
RAM® 4" Square Post Clamp Mount
with 75x75mm VESA Plate



RAM-D-101U-2461
RAM® Double Ball Mount with
75x75mm VESA Plate



RAM-VP-SW2F-89-2461
RAM® Tele-Pole™ with 8" & 9" Poles,
Swing Arm and 75x75mm VESA
Mount



RAM-GDS-CHARGE-V9U
GDS® 20-60VDC Input (12VDC
Output) Hardwire Charger with Male
DC 5.5mm



RAM-GDS-CHARGE-V10U
GDS® 10-32VDC Input (12VDC
Output) Hardwire Charger with Male
DC 5.5mm

