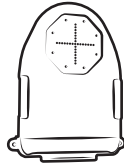


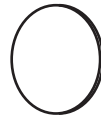
Parts Index

* not to scale



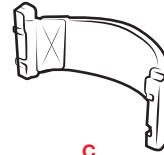
A

(1) Tab-Conn™ Body (Style may vary)



B

(16) Adhesive Pads



C

(1) Hand Strap

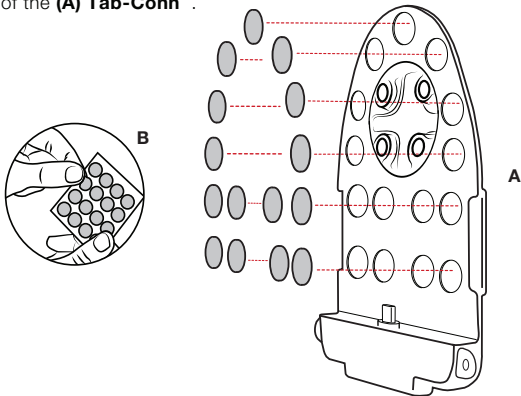
Patented & Pats. Pend.
rammount.com/ip

WARNING: If you are using a tablet with a case, tablet cannot be removed from case unless GDS® Tab-Conn™ is fully disassembled and removed from tablet.

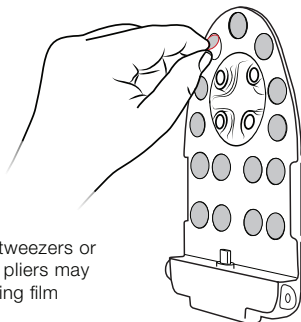
How to Assemble

1 If you are using a case, ensure tablet is properly installed in the case and that the back of your case is thoroughly cleaned. If you are not using a case, ensure the back of your tablet is thoroughly cleaned.

2 Adhere one side of all **(B) Adhesive Pads** to the inside cavities of the **(A) Tab-Conn™**.

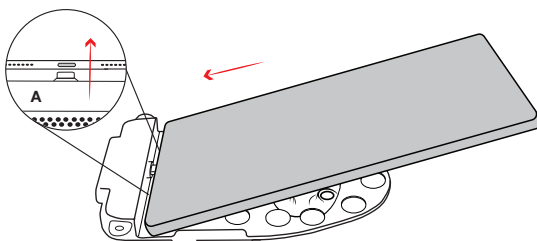


3 Carefully peel away remaining film from each **(B) Adhesive Pad**.

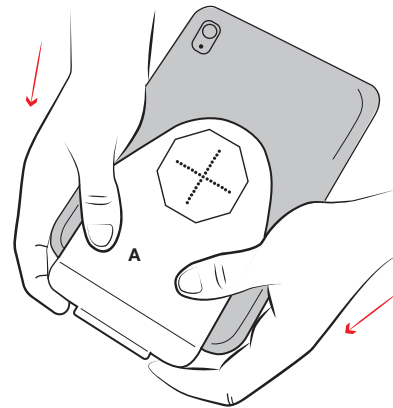


TIP: Use of tweezers or needle nose pliers may aid in removing film

4 While holding your tablet and **(A) Tab-Conn™** facing upward, gently insert the USB-C connector of **(A) Tab-Conn™** into the USB-C port of your tablet. Be careful not to allow **(B) Adhesive Pads** to make contact with tablet while connecting.

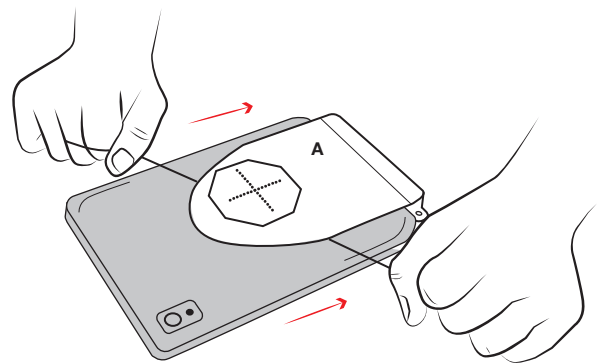


5 Once USB-C connector is fully engaged with tablet, evenly press back of **(A) Tab-Conn™** against tablet to connect all **(B) Adhesive Pads**.



How to Disassemble

1 Using floss (recommended) or fishing line, insert between **(A) Tab-Conn™** and tablet to gradually separate each adhesive from back of tablet. Once all adhesives are separated, disconnect USB-C connector from the tablet port. Use cleaner for any remaining adhesive residue.



RPR-INS-GDS-TABC1DB



Safety Precaution

Do not install this product near or over an airbag deployment area or in a location that obstructs the driver's vision or interferes with vehicle operation. National Products, Inc does not assume responsibility or liability for any such personal injury, death or property damage.