

**Item Number**  
RAM-VC-LEG-108

# RAM Console Leg Kits

RAM Mounting Systems

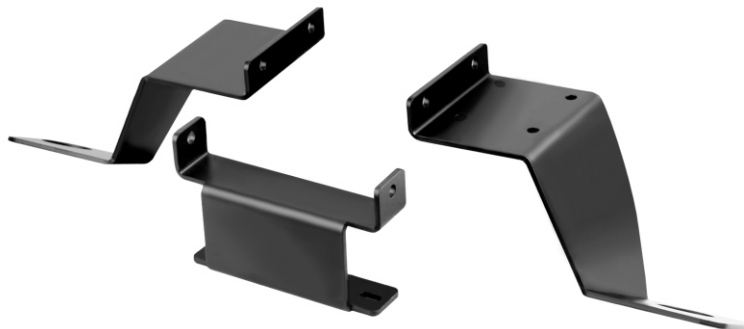
## Console Leg Kit for the FORD EXCURSION (2000-2005) FORD F-250 TO 550, SUPER DUTY (1999-2010)

### SPECIFICATIONS

**Drilling Requirements:**  
No drilling required

**Finish:**  
Black Powder Coating

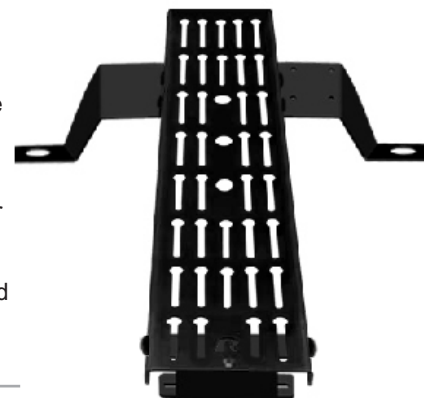
**Placement:**  
Over transmission hump



### INSTALLATION INSTRUCTIONS

The purpose of this instruction sheet is to illustrate the manufacturer's recommended method of installation for the RAM-VC-LEG-108 Leg Kit that includes anchor legs and a bagged hardware kit.

1. Begin by removing the front seat bolts of the drivers and passengers seat. There are two bolts for each seat located at the bottom front holding the seat frame legs to the vehicle floor board.
2. Once the inside forward mounting holes are exposed, align the anchor legs according to the illustration on the back of this sheet and place the seats on top of the top plate legs. The legs should be positioned in between the seat frame legs and the vehicle floor board. Once in position, start the thread of the bolt but do not fully tighten yet.
3. Align the top plate in the desired position over the top plate legs. Fasten the top plate to the top plate legs but do not fully tighten the hardware yet.
4. Attach the rear top plate leg to the top plate. With the hardware to the top plate legs still loose, adjust the assembly to insure that the rear top plate leg is firmly touching the raised floor of the vehicle center hump.
5. Once all the parts of the assembly are positioned properly, fully tighten all hardware involved in the installation.



RAM-VC-LEG-108 (Leg Kit)  
shown attached to  
RAM-VC-TP-29 (Top Plate)

#### Disclaimer regarding mounting of product:

National Products Inc. and/or RAM Mounting Systems is not liable under any theory of contract or tort law for any loss, damage, personal injury, incidental or consequential damages for personal injury or other damage of any nature arising directly or indirectly as a result of the improper installation or use of its products in vehicles or any other application. In order to safely install and use RAM Mounting System or National Products Inc. products full consideration of vehicle occupants, vehicle systems (i.e. the location of fuel lines, brakes lines, electrical, drive train or other systems), air-bags and other safety equipment is required. RAM Mounting Systems and National Products Inc. specifically disclaims any responsibility for the improper use or installation of its products not consistent with the original vehicle manufacturers specifications and recommendations.

**RAM Mounting Systems**  
8410 Dallas Ave S  
Seattle, WA 98108  
Phone: (206) 763-8361  
Fax: (206) 763-9615  
www.rammount.com  
support@rammount.com



RMR-INS-VC-LEG-108

**Important product notes for:  
Console applications**

# RAM Console Leg Kits

RAM Mounting Systems

## Area must be open or be made open to fit leg kits

### SPECIFICATIONS

**Drilling Requirements:**

For some vehicles, drilling may be required.  
See vehicle specific kits for No-Drill™ applications and universal for all others.

**Finish:**

Black Powder Coating



### INSTALLATION REQUIREMENTS

The area between the front seats must be accessible in order to mount the leg kits and top plates to support a console.

The area must be open between bucket seats or, if the vehicle has a 40/20/40 front bench seat or similar configuration, the center section must be removed.

If the vehicle has a floor mounted shifter, either automatic, manual, or 4x4 lever, make sure there is ample room to the rear of the shifter and the floor board is clear before making a RAM-VC-LEG kit selection. The installed RAM-VC-LEG kit should be installed in a manner that does not interfere with the operation of shifters or levers.

For some vehicles, there may be room between the center of the bench seat front and the dash of the vehicle. If removing the center section of the bench seat is not an option, but there is room at this location, consider the universal leg kit, short top plate, and short console box as a possible solution.

**If the vehicle is equipped with a factory installed center console, make sure it can be removed without :**

1. Permanently disabling the vehicle.
2. Exposing sensitive electrical equipment to harm.
3. Exposing mechanical systems to harm.
4. Interfering with factory installed safety equipment.

Some factory installed equipment and consoles cannot be removed. If this is the case for your vehicle, consider other RAM products designed for mounting electronics safely and securely in your vehicle.

**RAM Mounting Systems**  
8410 Dallas Ave S  
Seattle, WA 98108  
Phone: (206) 763-8361  
Fax: (206) 763-9615  
www.rammount.com  
support@rammount.com



RMR-INS-VC-LEG-108