

## Specifications

### Placement

Center of vehicle under the shift tower with the tube positioned on the passenger side of the tower

### Seat Configuration

Bucket/Bench

### Construction/Finish

Steel/Black powder coat

### Dimensions

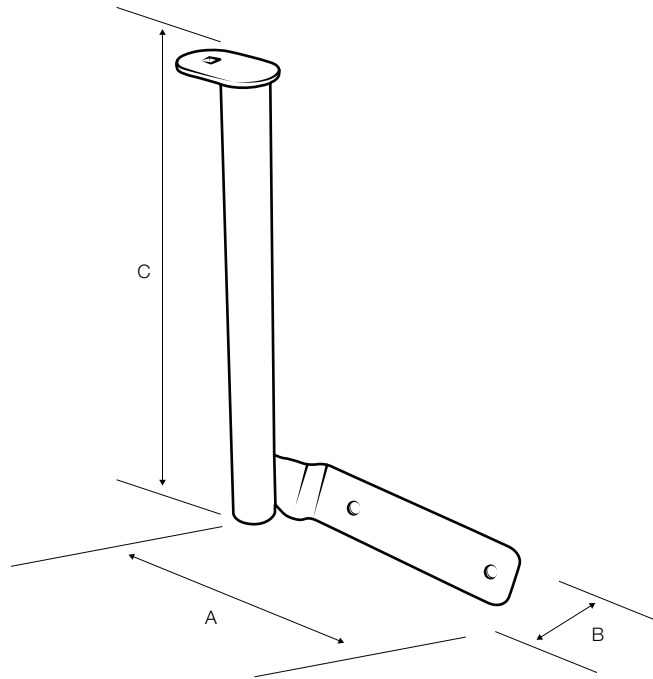
(A) 10.310" (B) 3.5" (C) 16.00"  
(Hole Center) 5.5"

### Pole or Pedestal

Welded/Attached

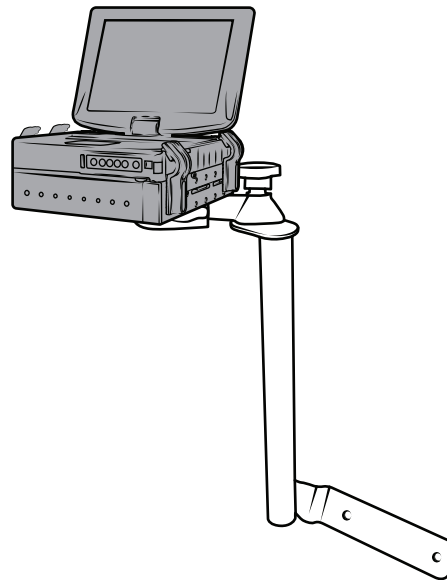
### Drilling Required

No - uses existing vehicle brackets and hardware.



## Features

Installs with no drilling required. Placement is over the top of the seat frame legs at floor board level. Rock solid construction. Lifetime warranty. Though not necessary for all applications, kit comes with additional stabilizer foot to help support heavier devices.



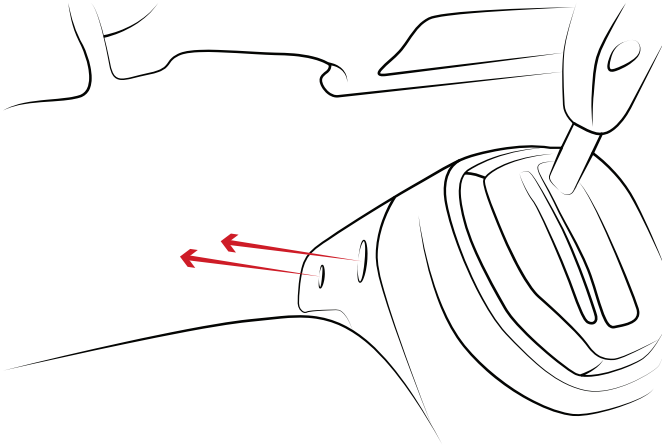
RMR-INS-VB-197



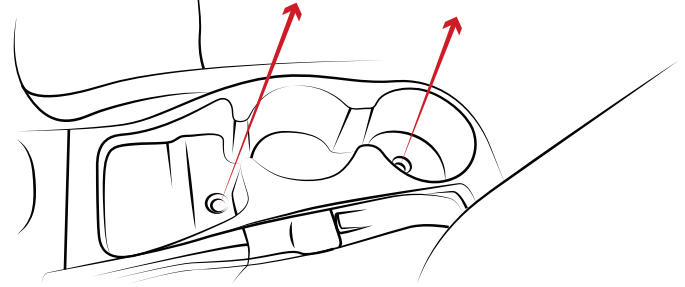
### Safety Precaution

Do not install this product near or over an airbag deployment area or in a location that obstructs the driver's vision or interferes with vehicle operation. National Products, Inc does not assume responsibility or liability for any such personal injury, death or property damage.

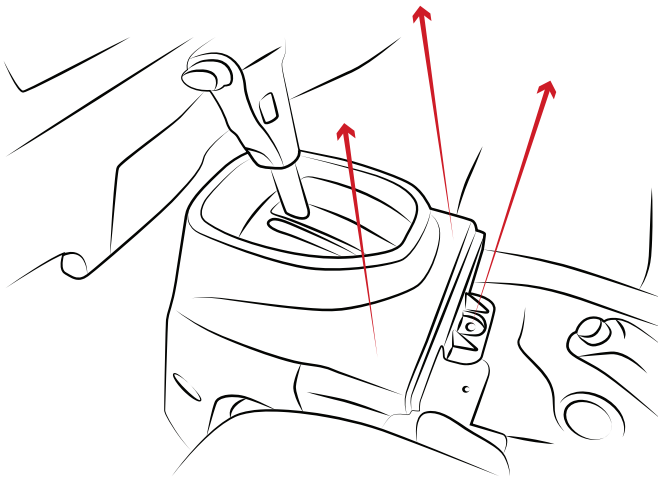
## Installation Instructions



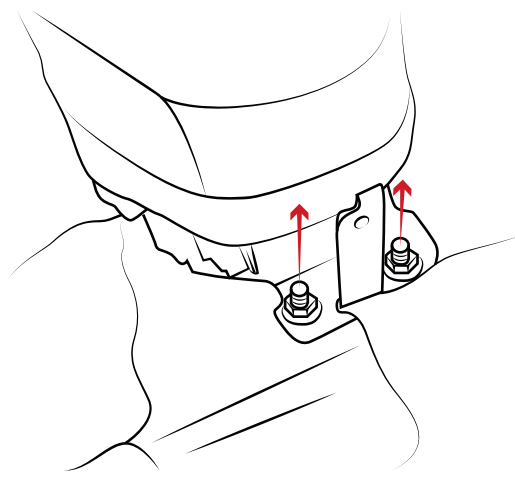
- 1 Depending on the model year of the vehicle, there will be three or four retaining clips that must be removed so that the shift tower can be lifted out of place. Using a Phillips screw driver, turn the plastic screw until the head begins to back out of the clip.



- 2 In some model years, there will be a Phillips screw or retaining clip located under the front of the cup holder. Remove these screws, pull the E-Brake and lift out the cup holder.



- 3 Locate the final retaining clip or Phillips screw and remove. Once out, the shift tower cover can be removed easily. Lift out the shift tower and store it along with the cup holder and all related hardware. Keep safe for re-installation.



- 4 Using a 1/2" socket, loosen the two nuts on the studs at the rear of the seat tower bracket. The nuts need only be loosened so that they are approximately 1/2" above the surface.

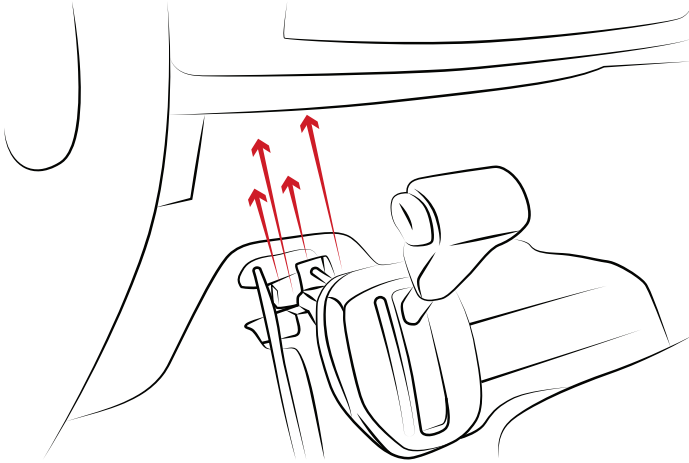
RMR-INS-VB-197



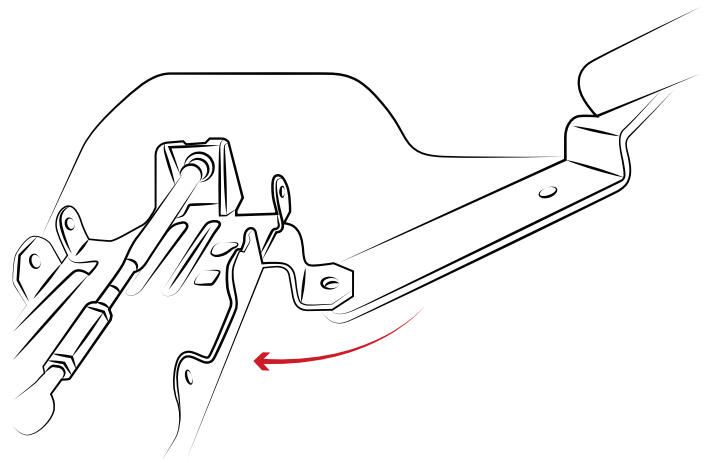
### Safety Precaution

Do not install this product near or over an airbag deployment area or in a location that obstructs the driver's vision or interferes with vehicle operation. National Products, Inc does not assume responsibility or liability for any such personal injury, death or property damage.

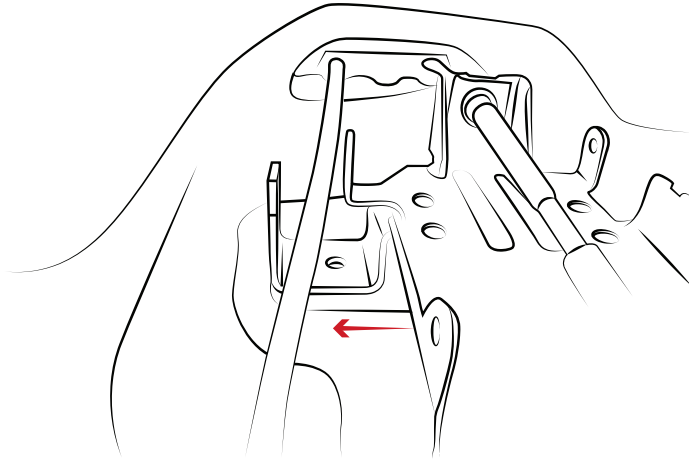
## Installation Instructions



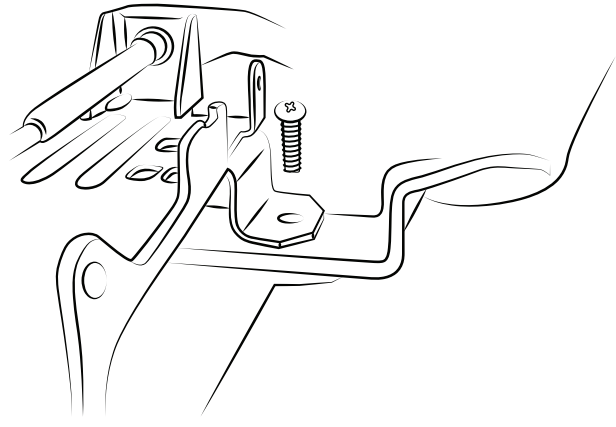
- 5 Locate the brackets and mounting bolts at the front of the shift tower. The 4 bolts located there will need to be removed for installation.



- 6 With the mounting bolts holding the shift tower brackets removed, lift the brackets so that a 1/4" gap is created between the floor pan and the shift tower bracket. Slide the No-Drill base between the shift tower bracket and the floor pan.



- 7 Position the No-Drill base so that the holes are aligned and reposition both the bracket and base over the mounting holes in the floor pan.



- 8 With the mounting holes aligned, re-insert the mounting bolts and begin thread by hand.

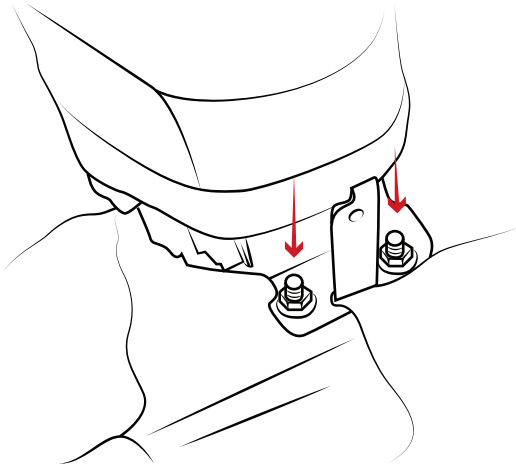
RMR-INS-VB-197



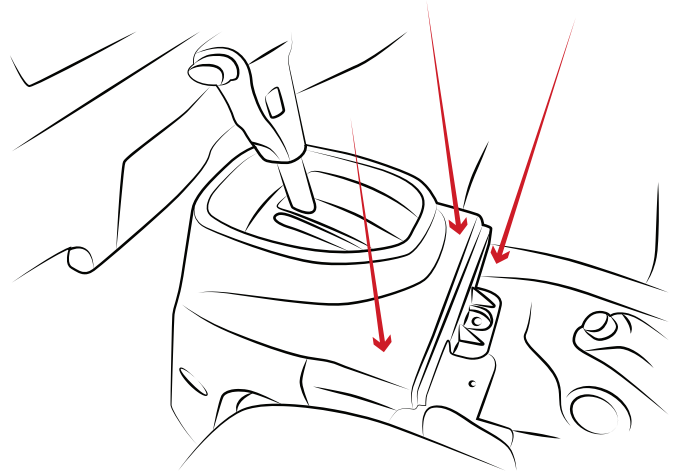
### Safety Precaution

Do not install this product near or over an airbag deployment area or in a location that obstructs the driver's vision or interferes with vehicle operation. National Products, Inc does not assume responsibility or liability for any such personal injury, death or property damage.

## Installation Instructions



- 9 With all of the mounting bolts started by hand, use a socket wrench or powered drill type tool to fully tighten the bolts and nuts previously loosened.



- 10 Lower the shift tower cover back over the shift tower. Re-place the retaining clips previously removed and re-install the cup holder.

RMR-INS-VB-197



### Safety Precaution

Do not install this product near or over an airbag deployment area or in a location that obstructs the driver's vision or interferes with vehicle operation. National Products, Inc does not assume responsibility or liability for any such personal injury, death or property damage.