

Item Number _____

RAM-VB-151 & RAM-VB-151-SW1

RAM No-Drill™ Seat Bases
RAM Mounting Systems**SPECIFICATIONS****Placement**

Attaches to upper section, left hand side of passenger seat. Base is designed to match contours and align with existing hole patterns for ease of installation.

Drilling Required

No - uses existing vehicle hardware

Seat Configuration

Bucket

Pole or Pedestal

Included on Base

Construction/Finish

Steel/Black Powdercoat

Weight

8 lbs.

Dimensions

A = 16.375", B = 8.5", C = 12.75"

Hole Center = 6.75" and 8.25"

Features

Installs in minutes with no drilling required

Misc.

Rock solid construction
Lifetime warranty

RAM Mounting Systems

8410 Dallas Ave S
Seattle, WA 98108
Phone: (206) 763-8361
Fax: (206) 763-9615
www.rammount.com
support@rammount.com



RAM-VB-151-SW1



RAM-VB-151



RMR-INS-VB-151

Item Number _____

RAM-VB-151 & RAM-VB-151-SW1

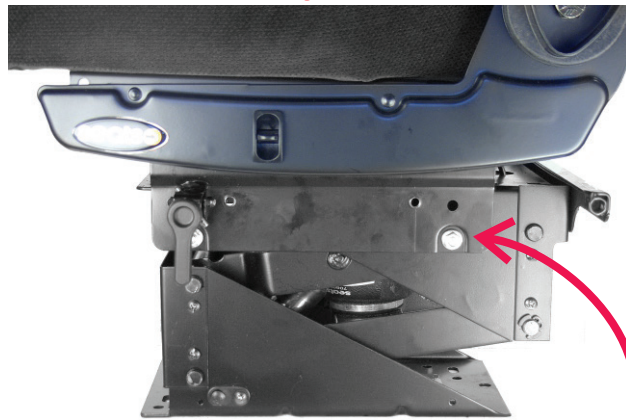
RAM No-Drill™ Seat Bases

RAM Mounting Systems

INSTALLATION INSTRUCTIONS

1. Remove the nut that is attached to the seat frame. This is located on the lefthand side, underneath the seat.
(See Figure 1)
2. Place the threaded bolts through the holes, facing outward then slide custom metal base over the bolts. Attach the washers and 3 nuts over the threaded bolts then tighten.
(See Figure 2)

Figure 1



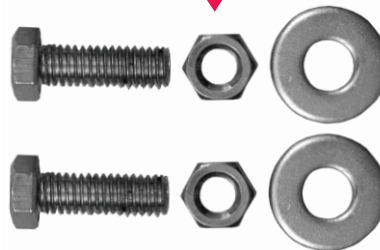
**Detach supplied
seat nut**

Figure 2



**Attach RAM hardware
bolts, washers and nuts**

**Attach supplied
seat nut**



RAM Mounting Systems
8410 Dallas Ave S
Seattle, WA 98108
Phone: (206) 763-8361
Fax: (206) 763-9615
www.rammount.com
support@rammount.com



RMR-INS-VB-151