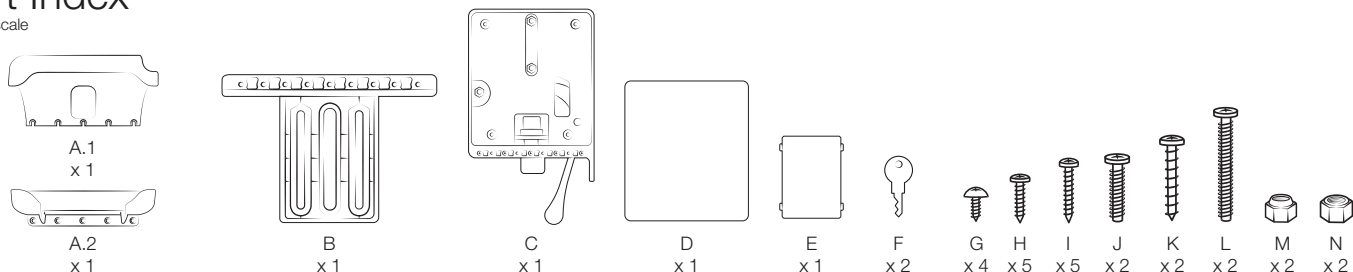


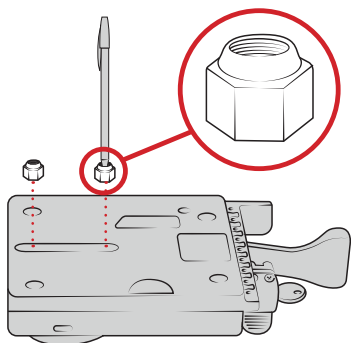
Please read all instruction guides and manuals that are included with this bundle before installation.

## Part Index

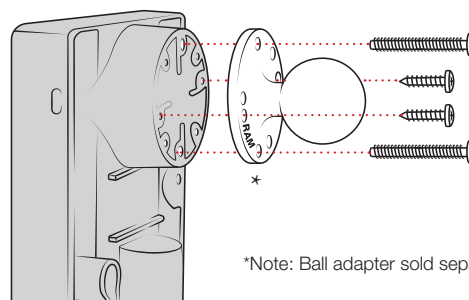
\*not to scale



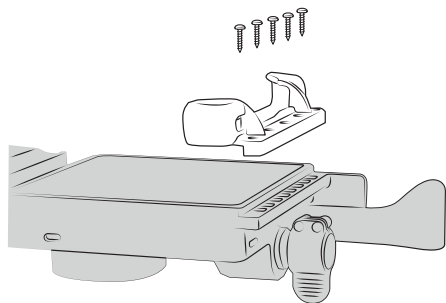
- 1 Position (M) nuts in nut pockets, guiding them in place with a pen.



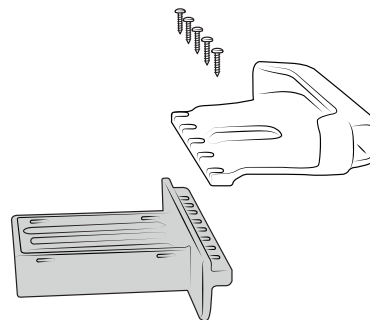
- 2 While holding (H) nuts in place, attach ball adapter to back of holder using (K) screws. RAM® logo must be facing in the shown direction. Attach additional (L) screws.



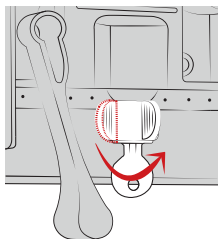
- 3 Using (I) screws, attach bottom cup to Tab-Lock™.



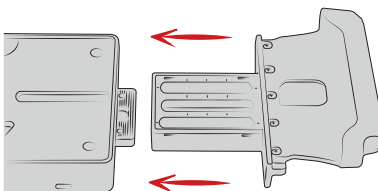
- 4 Using (H) screws, attach top cup to Tab-Lock™.



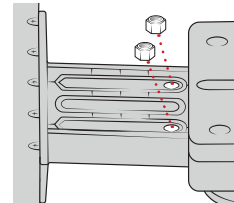
- 5 Twist key lock to release internal slide.



- 6 Insert top slide over internal vehicle dock.



- 7 Place (N) nuts into top slide, aligning with holes in internal slide.



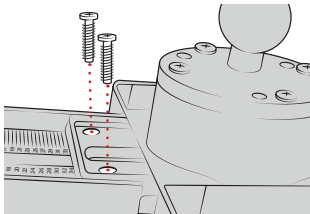
RMR-INS-TL-SAM29



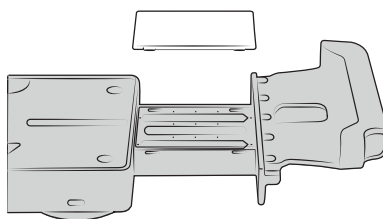
### Safety Precaution

Do not install this product near or over an airbag deployment area or in a location that obstructs the driver's vision or interferes with vehicle operation. National Products, Inc does not assume responsibility or liability for any such personal injury, death or property damage.

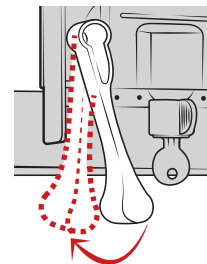
- 8** Attach (J) screws from behind the internal slide. Do not fully tighten



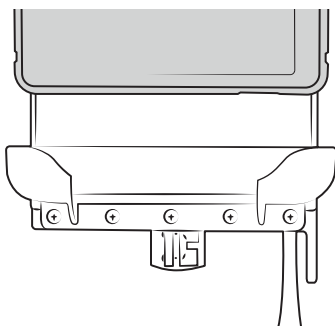
- 9** With the numbers facing down, wedge top slide cover into top slide. Using pressure, snap into place.



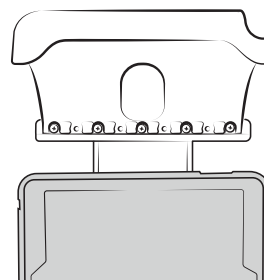
- 10** Pull lever to engage lock.



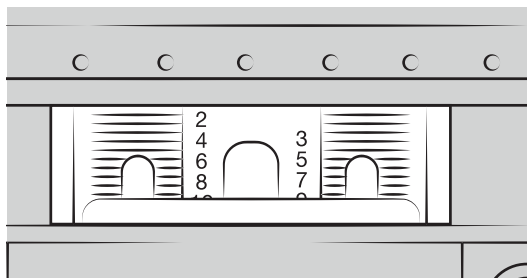
- 11** Place tablet on bottom docking cup.



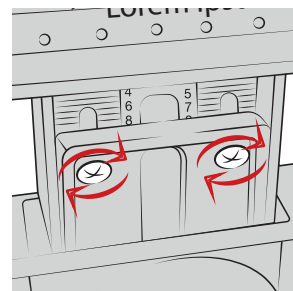
- 12** Press down on top cup to secure over tablet.



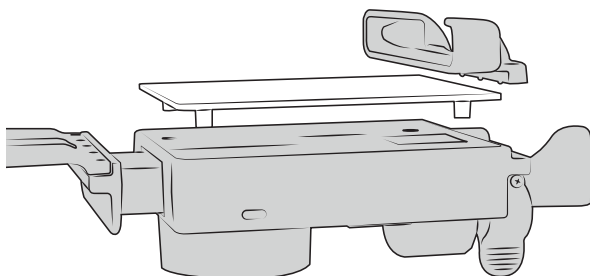
- 13** On the back of the top slide, review the numbers shown in the middle. Take note of the lowest number that is fully visible. This reference will help you in the next step. In this example, the lowest visible number is 8.



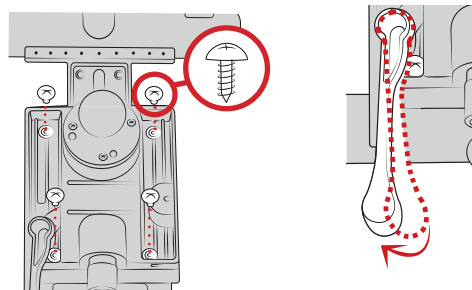
- 14** Release lock and remove tablet. Set your top cup to the appropriate setting using the reference number from step 13. When in place, fully tighten the (J) screws.



- 15** Position front cover over vehicle dock assembly. You will need to remove bottom cup momentarily to do this.



- 16** Turn Tab-Lock™ over. Secure front cover using (G) screws on back of slide assembly. Lock must be engaged to access all four holes as shown.



RMR-INS-TL-SAM29



## Safety Precaution

Do not install this product near or over an airbag deployment area or in a location that obstructs the driver's vision or interferes with vehicle operation. National Products, Inc does not assume responsibility or liability for any such personal injury, death or property damage.