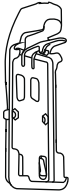


Parts Index
* Not to scale

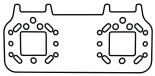
A Sonim Cradle



B RSM Mic Clip



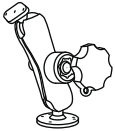
C Mounting Bracket



D RSM Mic



E Double Ball Mount



F (x2) Screws #8-32 x 3/4"



G (x2) Nylock Nuts #8-32



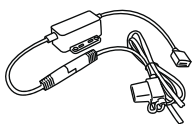
H (x3) Screws #6-32 x 3/8"



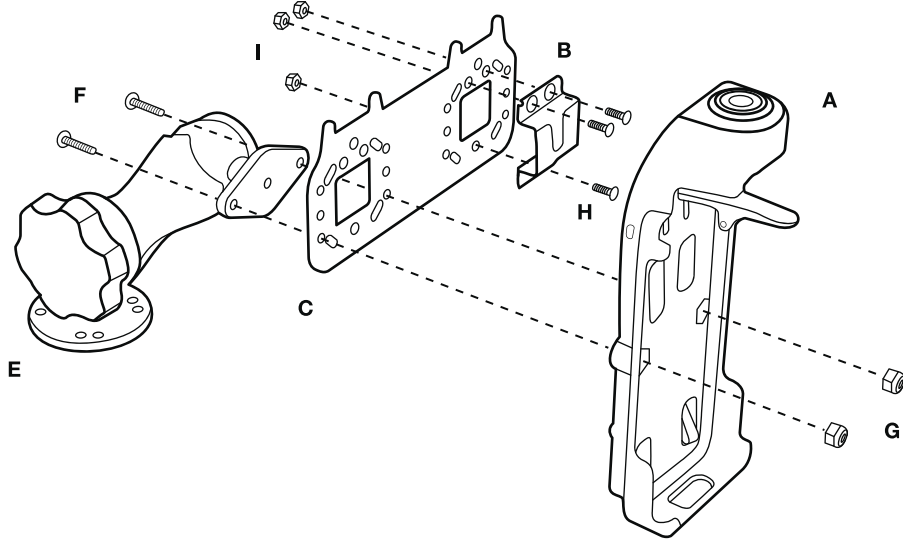
I (x3) Nuts #6-32



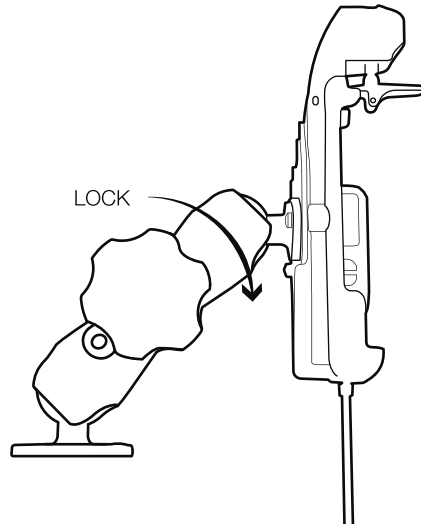
J Hardwire Charger



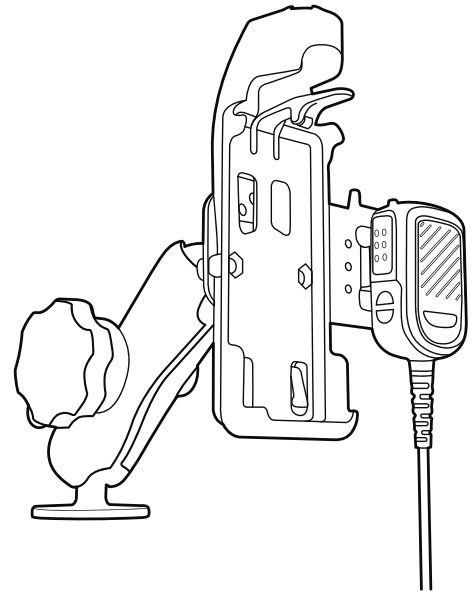
- Assemble **(E) Double Ball Mount** with **(C) Mounting Bracket** and **(A) Sonim Cradle** using **(F) Screws** and **(G) Nuts**. Attach **(B) RSM Mic Clip** to right side of the bracket using **(H) Screws** and **(I) Nuts**.



- To adjust the position of the bracket system, unlock the RAM® Pin-Lock™ knob using the key and move the socket arm to desired position. Use the same key turning clockwise to lock the socket arm into position.



Completed Assembly



RMR-INS-SNMX-1



Safety Precaution

Do not install this product near or over an airbag deployment area or in a location that obstructs the driver's vision or interferes with vehicle operation. Electronic devices attached to this product are not to be used while vehicle is in motion. National Products, Inc. does not assume responsibility or liability for any such personal injury, death, or property damage.