

Scan for video instructions



Parts Index

*not to scale



A

Screen Protector



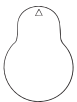
B

Wet Wipe



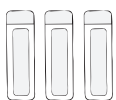
C

Microfiber Cloth



D

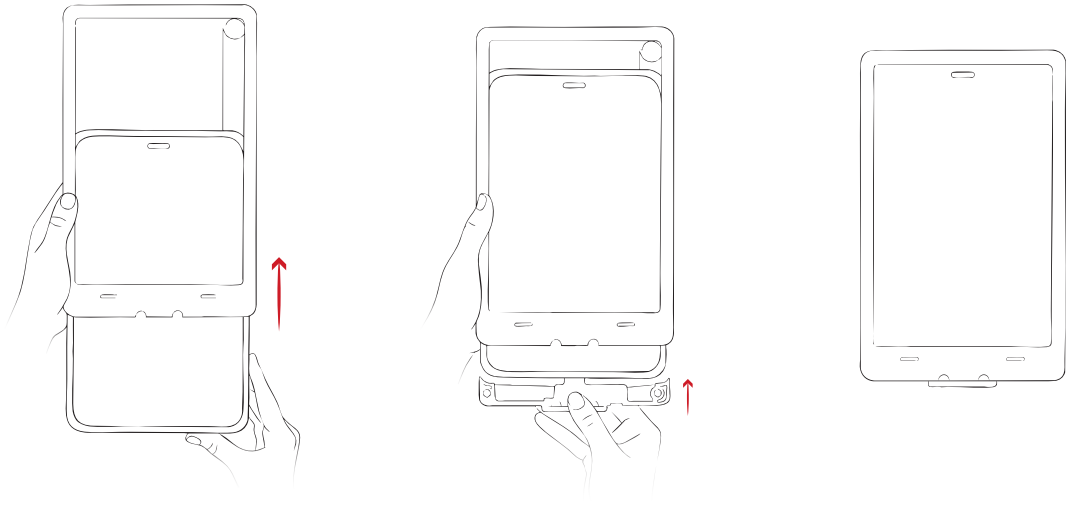
Dust Absorber



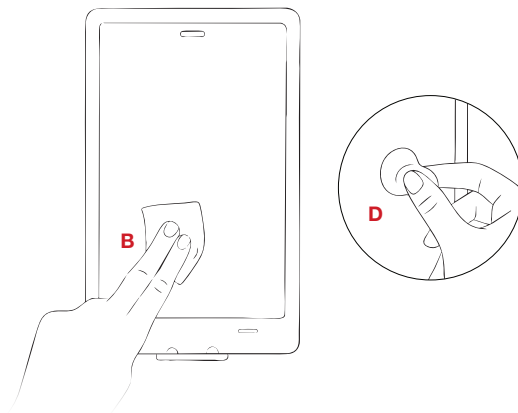
E

Guide Stickers
(Not needed for installing with RAM® Thin-Case™)

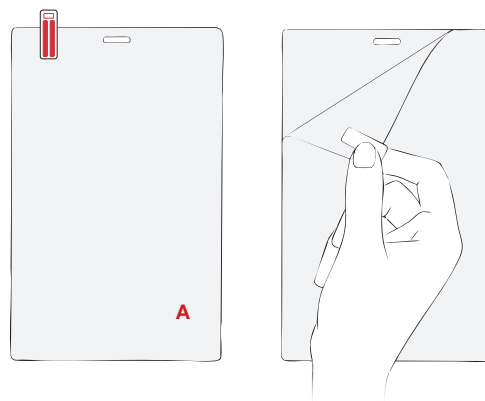
- 1 Insert device into the Thin-Case™ as shown below.



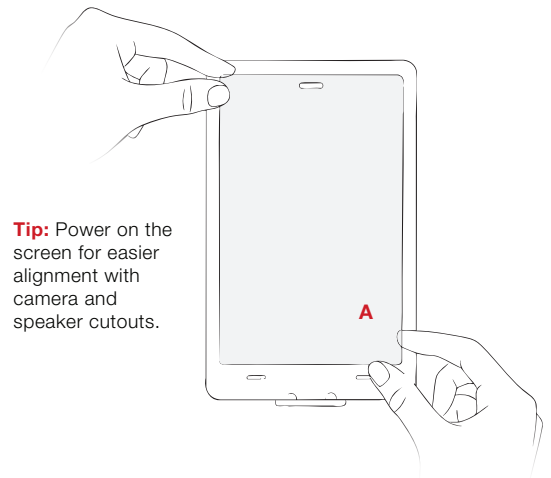
- 2 Clean the display with the **(B) Wet Wipe**, allow it to dry, then use the **(D) Dust Absorber** to ensure a spotless surface.



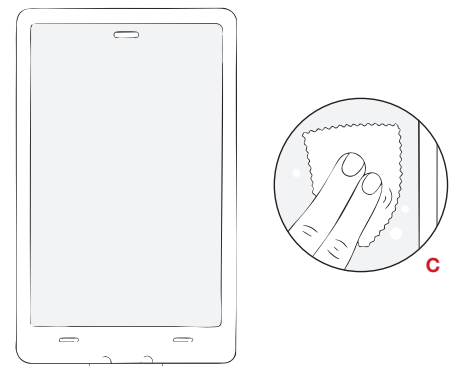
- 3 Peel off the protective film on the **(A) Screen Protector**.



- 4 Position **(A) Screen Protector** above the display then lower it into place once aligned.



- 5 Utilize the **(C) Microfiber Cloth** to remove any remaining bubbles.



RMR-INS-SKIN-SP-TC