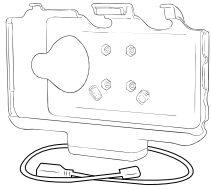


## Parts Index

\* not to scale



**A** Vehicle Dock

**B** Dock Mounting Hardware Pack

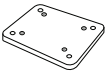
(x4) #8-32 x 5/8" Screws

(x4) #8-32 Nylock Nuts

**C** Double Ball Mount



**D** Backing Plate



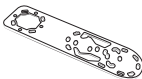
**E** Backing Plate Hardware

(x4) #8-32 x 1" Screws

(x4) #8 Lock Washers

(x4) #8 Washers

**F** Mounting Bracket



**G** Hardwire Charger



**H** USB-C Cable  
Clamp Kit

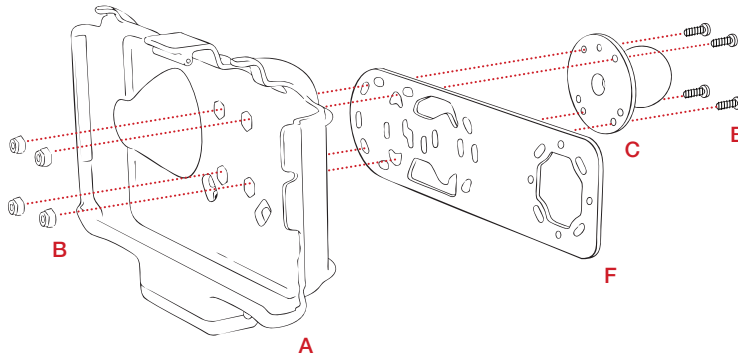


**I** USB-A Cable  
Clamp Kit

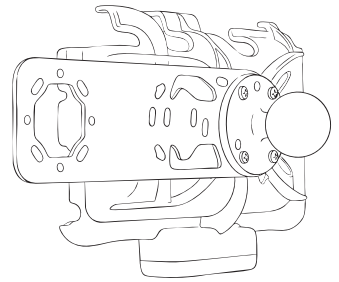


Patented & Pats. Pend.  
rammount.com/ip

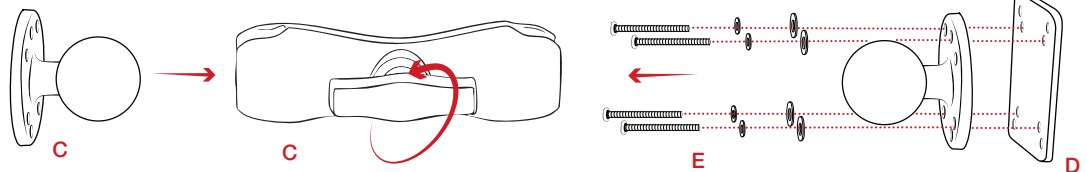
- 1** Assemble **(C) Double Ball Mount** with **(F) Mounting Bracket** and **(A) Vehicle Dock** using the **(B) Dock Mounting Hardware Pack**.



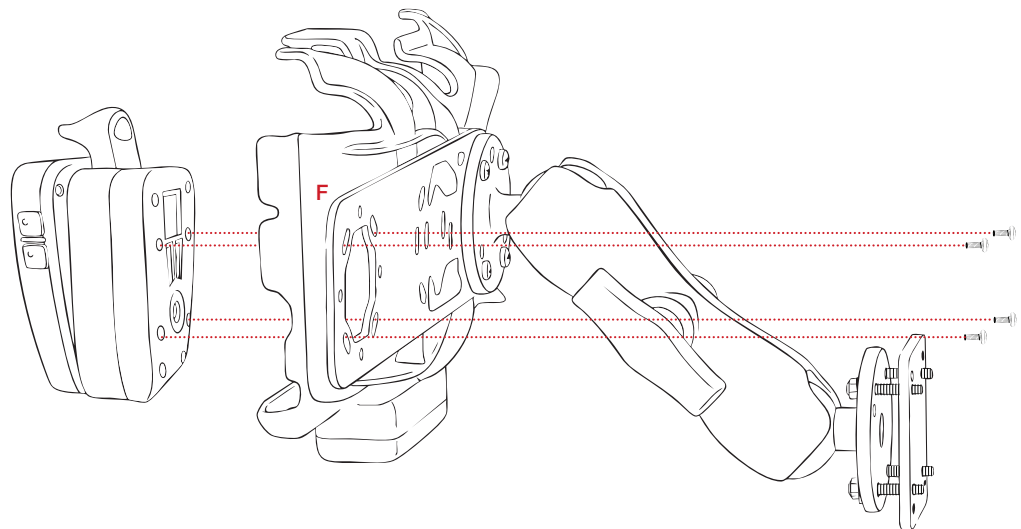
Completed Step 1 Assembly View



- 2** Connect **(C) Double Ball Mount** to **(D) Backing Plate** using **(E) Backing Plate Hardware Pack**.



- 3** Connect the **Speaker Dock** (not included) to **(F) Mounting Bracket** using the hardware included with the Speaker Dock.



RMR-INS-SAM60-PTT1

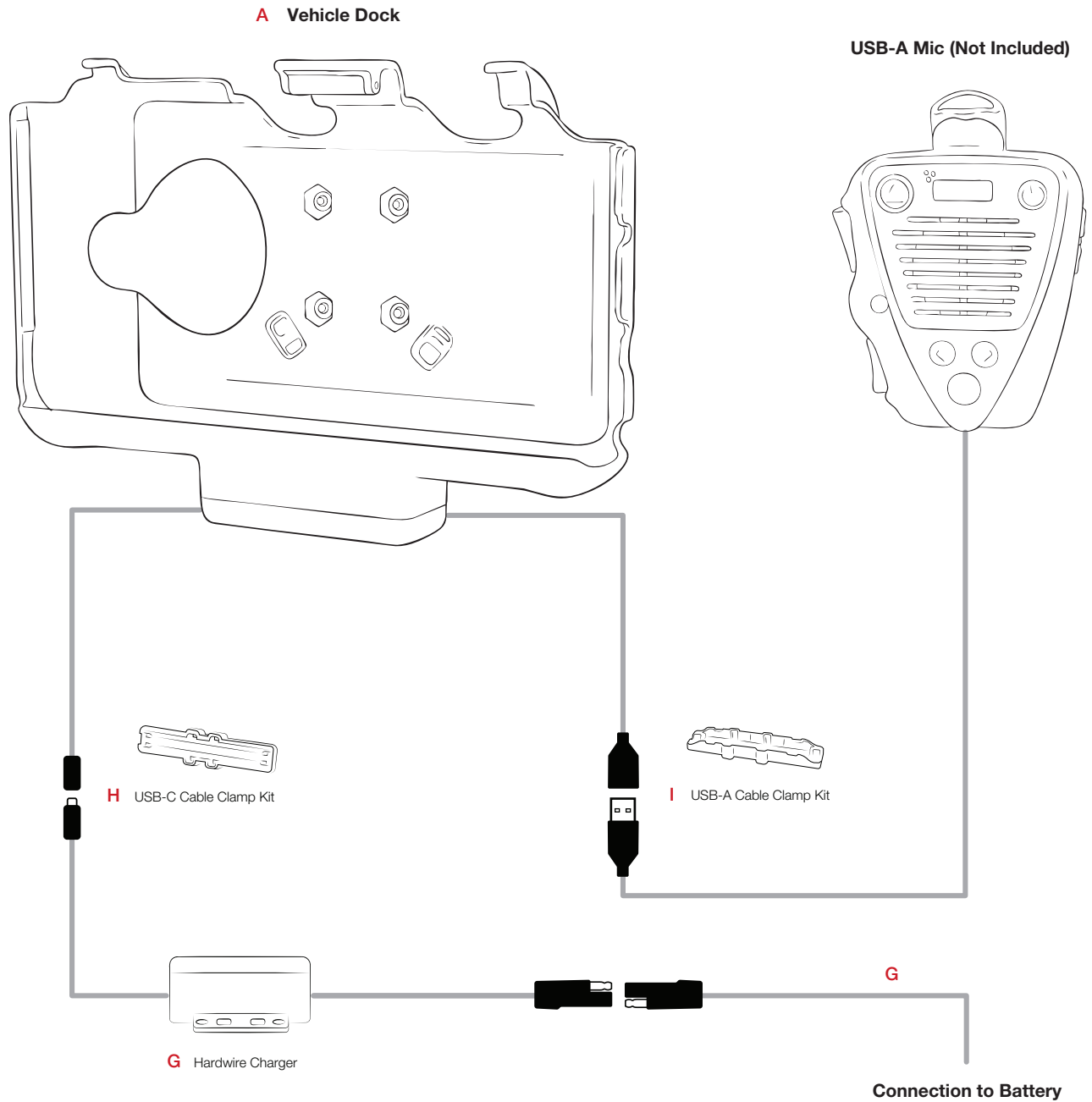


### Safety Precaution

Do not install this product near or over an airbag deployment area or in a location that obstructs the driver's vision or interferes with vehicle operation. National Products, Inc does not assume responsibility or liability for any such personal injury, death or property damage.

## Wiring and Retention Diagram

Patented & Pats. Pend.  
rammount.com/ip



RMR-INS-SAM60-PTT1



### Safety Precaution

Do not install this product near or over an airbag deployment area or in a location that obstructs the driver's vision or interferes with vehicle operation. National Products, Inc does not assume responsibility or liability for any such personal injury, death or property damage.