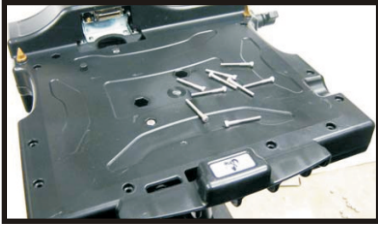
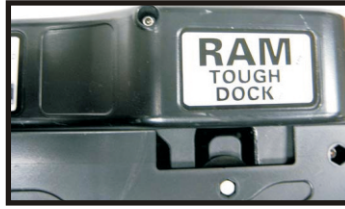


RAM® TOUGHBOOK™ REPLACEMENT LOCK INSTALLATION

1. REMOVE 9 QTY. 1 1/4" SOCKET CAP SCREWS.



2. LOOSEN 1 QTY. 3" SOCKET CAP SCREWS.
DO NOT REMOVE



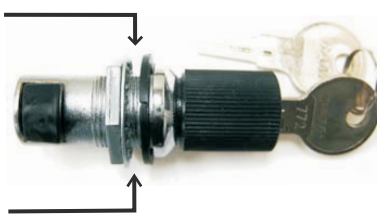
3. LIFT TOP AND REMOVE LOCK.



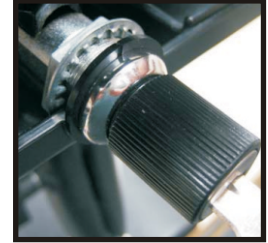
4. REMOVE SPACER FROM OLD LOCK AND PLACE
ON NEW LOCK.



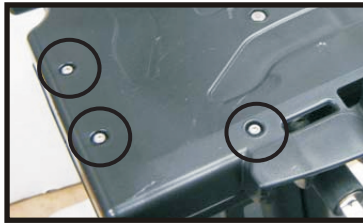
5. ADJUST NUT TO LEAVE APPROX. 1/8"
BETWEEN TOOTHED WASHER AND SPACER.



6. INSTALL NEW LOCK



7. REPLACE AND TIGHTEN 9 QTY. 1/4" AND 1 QTY. 3" SOCKET CAP SCREWS.
DO NOT OVER TIGHTEN CAP SCREWS. IF DOCKING CONNECTOR DOES
NOT UNLATCH EASILY, LOOSEN INDICATED CAP SCREWS.



8. TIGHTEN LOCK NUT WITH FLAT-BLADED SCREWDRIVER.



RAM Mounting Systems

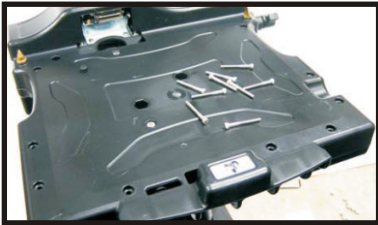
8410 Dallas Ave S
Seattle, WA 98108
Phone: (206) 763-8361
Fax: (206) 763-9615
www.rammount.com
support@rammount.com



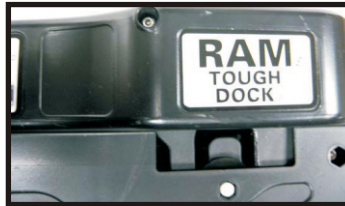
This document, including images, may not be reproduced partly or fully without the expressed written consent of National Products, Inc.

RAM® TOUGHBOOK™ REPLACEMENT LOCK INSTALLATION

1. REMOVE 9 QTY. 1 1/4" SOCKET CAP SCREWS.



2. LOOSEN 1 QTY. 3" SOCKET CAP SCREWS.
DO NOT REMOVE



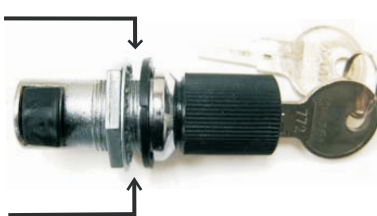
3. LIFT TOP AND REMOVE LOCK.



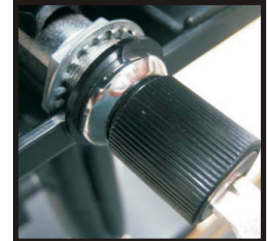
4. REMOVE SPACER FROM OLD LOCK AND PLACE
ON NEW LOCK.



5. ADJUST NUT TO LEAVE APPROX. 1/8"
BETWEEN TOOTHED WASHER AND SPACER.



6. INSTALL NEW LOCK



7. REPLACE AND TIGHTEN 9 QTY. 1/4" AND 1 QTY. 3" SOCKET CAP SCREWS.
DO NOT OVER TIGHTEN CAP SCREWS. IF DOCKING CONNECTOR DOES
NOT UNLATCH EASILY, LOOSEN INDICATED CAP SCREWS.



8. TIGHTEN LOCK NUT WITH FLAT-BLADED SCREWDRIVER.



RAM Mounting Systems

8410 Dallas Ave S
Seattle, WA 98108
Phone: (206) 763-8361
Fax: (206) 763-9615
www.rammount.com
support@rammount.com



This document, including images, may not be reproduced partly or fully without the expressed written consent of National Products, Inc.